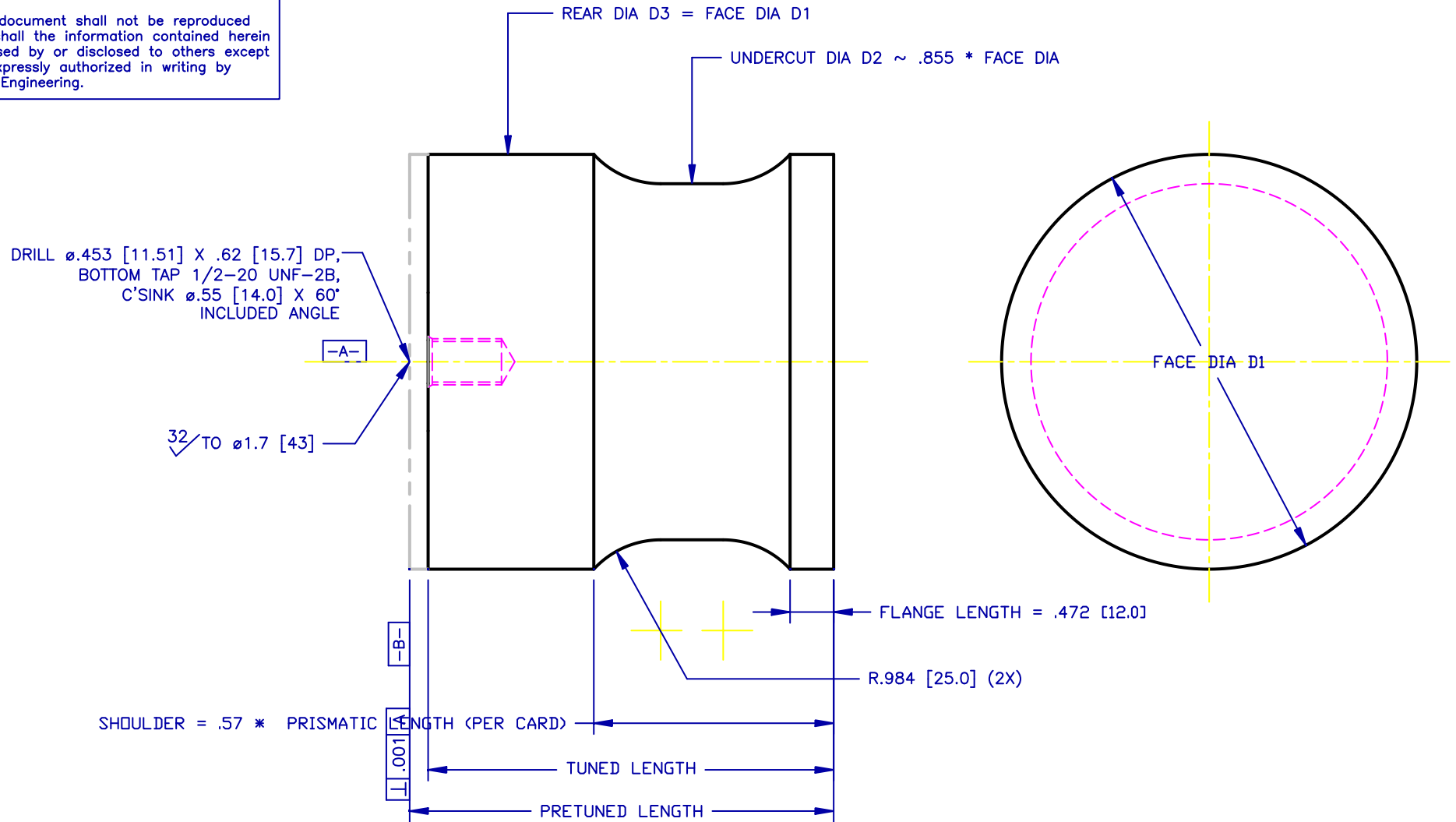


This document shall not be reproduced nor shall the information contained herein be used by or disclosed to others except as expressly authorized in writing by Krell Engineering.



NOTES:

1. PRISMATIC LENGTH = TUNED LENGTH OF UNSHAPED CYLINDER OF DIAMETER D1 WITHOUT STUD.
2. TUNING PROCEDURE: TUNE FROM -B- TO 20000 ± 100 HZ.
3. CARD = COMPUTER AIDED RESONATOR DESIGN

REV.	DATE	REFERENCE	TOLERANCES
0	11/18/06		X.XX ±.01 X.XXX ±.005 ANGLE ± 1° ⊙ .001 TIR   63/ ▱ .0005 TIR ( ) = NOMINAL ALL DIMS TYPICAL

**KRELL ENGINEERING**

BALTIMORE, MD 21228 (410) 747-5731

20 KHZ SPOOL HORN NOMENCLATURE  
AND DIMENSIONS

MAT'L: AL 7075-T6

99-037-01-00-0.DWG