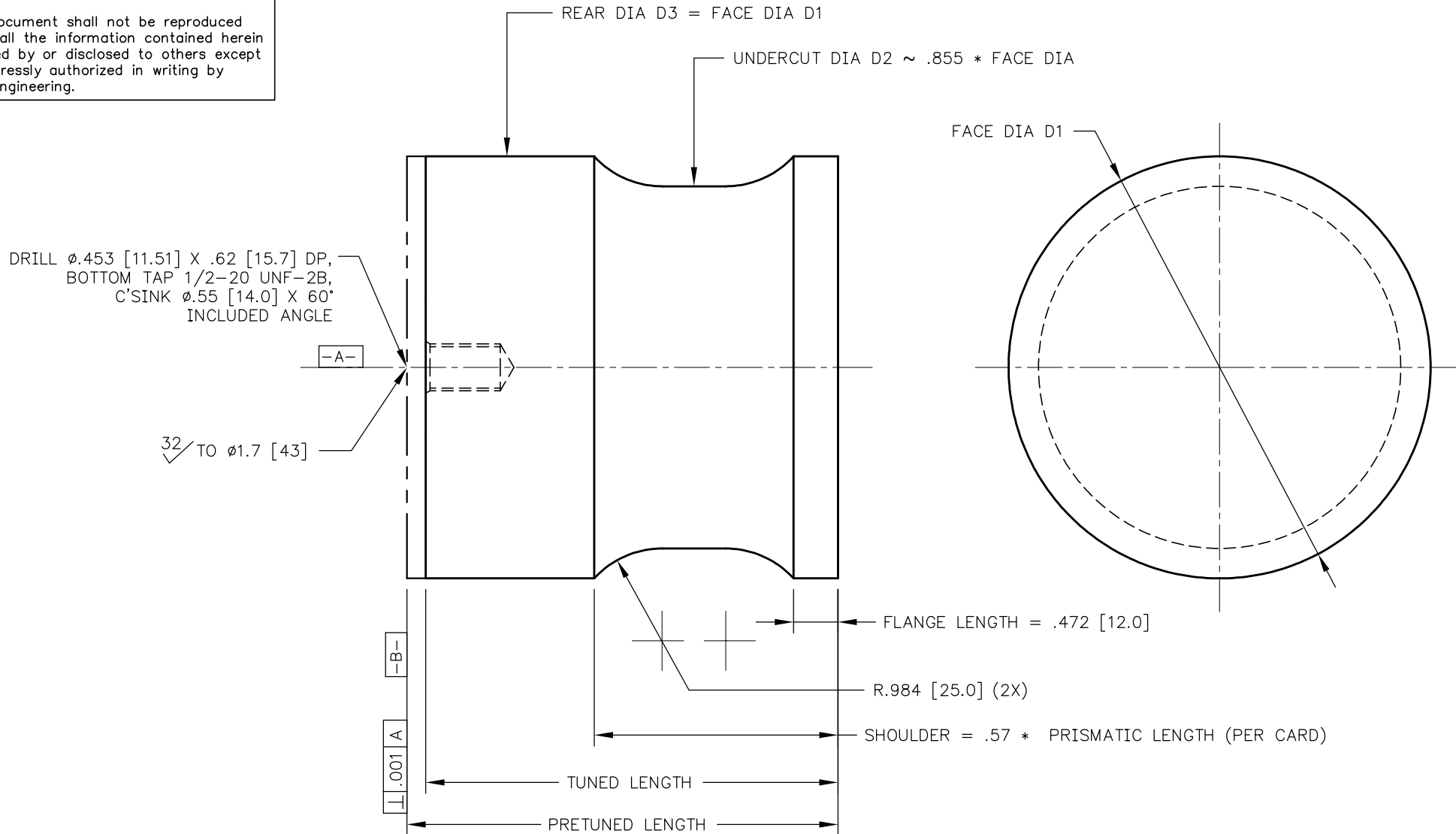


CONFIDENTIAL
Unauthorized Disclosure Prohibited

This document shall not be reproduced nor shall the information contained herein be used by or disclosed to others except as expressly authorized in writing by Krell Engineering.



NOTES:

1. PRISMATIC LENGTH = TUNED LENGTH OF UNSHAPED CYLINDER OF DIAMETER D1 WITHOUT STUD.
2. TUNING PROCEDURE: TUNE FROM -B- TO 20000 ± 100 HZ.
3. CARD = COMPUTER AIDED RESONATOR DESIGN

REV.	DATE	REFERENCE	TOLERANCES
0	11/18/06		X.XX ±.01 X.XXX ±.005 ANGLE ± 1° © .001 TIR 63 ▱.0005 TIR () = NOMINAL ALL DIMS TYPICAL

KRELL ENGINEERING
BALTIMORE, MD 21228 (410) 747-5731

20 KHZ SPOOL HORN NOMENCLATURE
AND DIMENSIONS

MAT'L: AL 7075-T6

99-037-01-00-0.DWG